

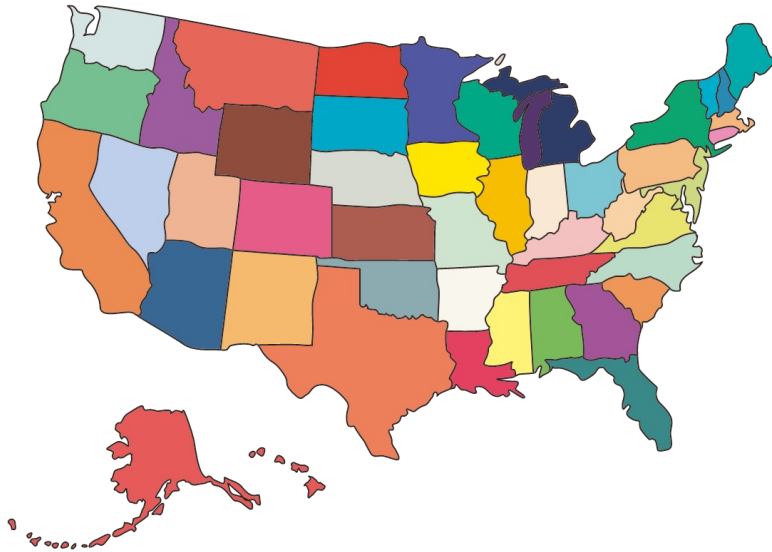
D I G I T A L M A G A Z I N E

LEARN⁺™ more

States & Capitals



E N R I C H M E N T



Inside, you will **LEARN MORE** about all 50 states. Each page includes state birthdays, state nicknames, state tree, state bird, state flower, fun facts & more!

[Activity Sheets](#)

States & Capitals Index

1 - Delaware	13 - Rhode Island	26 - Michigan	39 - North Dakota
2 - Pennsylvania	14 - Vermont	27 - Florida	40 - South Dakota
3 - New Jersey	15 - Kentucky	28 - Texas	41 - Montana
4 - Georgia	16 - Tennessee	29 - Iowa	42 - Washington
5 - Connecticut	17 - Ohio	30 - Wisconsin	43 - Idaho
6 - Massachusetts	18 - Louisiana	31 - California	44 - Wyoming
7 - Maryland	19 - Indiana	32 - Minnesota	45 - Utah
8 - South Carolina	20 - Mississippi	33 - Oregon	46 - Oklahoma
9 - New Hampshire	21 - Illinois	34 - Kansas	47 - New Mexico
10 - Virginia	22 - Alabama	35 - West Virginia	48 - Arizona
11 - New York	23 - Maine	36 - Nevada	49 - Alaska
12 - North Carolina	24 - Missouri	37 - Nebraska	50 - Hawaii
	25 - Arkansas	38 - Colorado	

Delaware



1st State to join the Union
on December 7, 1787.

Fun Facts:

With a land area of 1,948 square miles, Delaware is the 2nd smallest state.

Delaware has a higher population of chickens than people.

Dover is America's longest-serving state capital.

The First State

State Tree



American
Holly

State Bird



Blue Hen

State Capital



Dover

State Flower



Peach Blossom

State Mammal



Grey Fox

Dover

Pennsylvania



Fun Facts:

Pennsylvania is where the Declaration of Independence and the Constitution were debated and signed.

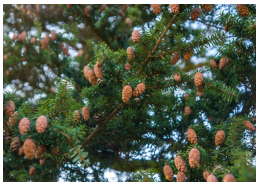
Pennsylvania is the only one of the original 13 colonies that does not border the Atlantic Ocean.

Harrisburg began as a trading post around 1718.

2nd State to join the Union
on December 12, 1787.

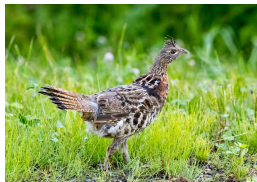
The Keystone State

State Tree



Eastern
Hemlock

State Bird



Ruffed Grouse

State Capital



Harrisburg

State Flower



Mountain-Laurel

State Mammal



White-Tailed
Deer

Harrisburg

New Jersey



Fun Facts:

New Jersey has the highest population density in the US, making it the most crowded.

New Jersey is known as the "Diner Capital of the World", with about 500 diners throughout the state.

Trenton hosted the first professional basketball game in 1896.

3rd State to join the Union
on December 18, 1787.

The Garden State

State Tree



Northern Red
Oak

State Bird



American
Goldfinch

State Capital



Trenton

State Flower



Common Blue
Violet

State Mammal

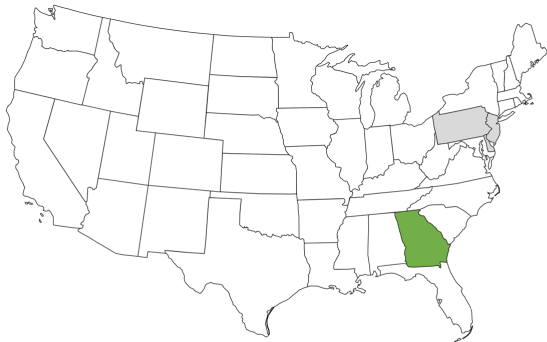


Horse

Trenton



Georgia



Fun Facts:

Georgia is home to one of the oldest state parks in the country – Indian Springs State Park.

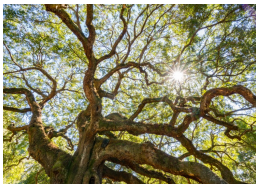
In 1945, Georgia became the first state to change the legal age to vote from 21 to 18.

The capitol building is gilded with 43 ounces of locally mined gold.

4th State to join the Union
on January 2, 1788.

The Peach State

State Tree



Live Oak

State Bird



Brown Thrasher

State Capital



Atlanta

State Flower



Cherokee Rose

State Fruit



Peach

Atlanta

Connecticut



Fun Facts:

Connecticut is home to Scoville Memorial Library – the first publicly funded library in the US.

The world's first nuclear powered submarine was built in Connecticut.

The Hartford Courant is the oldest continuously published newspaper in the US.

5th State to join the Union
on January 9, 1788.

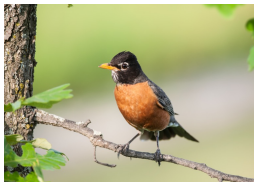
The Constitution State

State Tree



White Oak

State Bird



American
Robin

State Capital



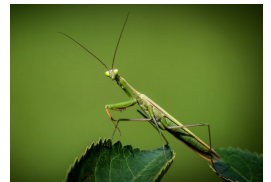
Hartford

State Flower



Mountain-Laurel

State Insect



Praying Mantis

Hartford

Massachusetts



Fun Facts:

Massachusetts is one of the 13 original colonies.

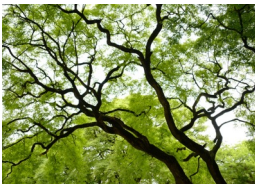
Massachusetts is home to the America's first University – Harvard.

Boston has seen many firsts - including the first public park, subway system and telephone call.

6th State to join the Union
on February 6, 1788.

The Bay State

State Tree



American
Elm

State Bird



Black-Capped
Chickadee

State Capital



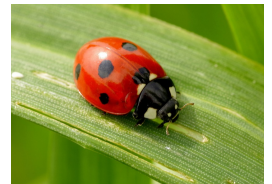
Boston

State Flower



Mayflower

State Insect



Ladybug

Boston

Maryland



Fun Facts:

Maryland is often referred to as "America in Miniature" due to the variety in its terrain.

Maryland is one of two states that gave up some of its land to help form the Nation's capital in 1790.

Annapolis once served as the capital of the US (1783 – 1784).

7th State to join the Union
on April 28, 1788.

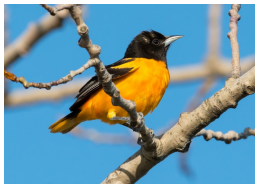
The Old Line State

State Tree



White Oak

State Bird



Baltimore Oriole

State Capital



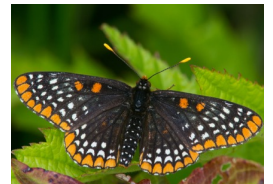
Annapolis

State Flower



Black-Eyed Susan

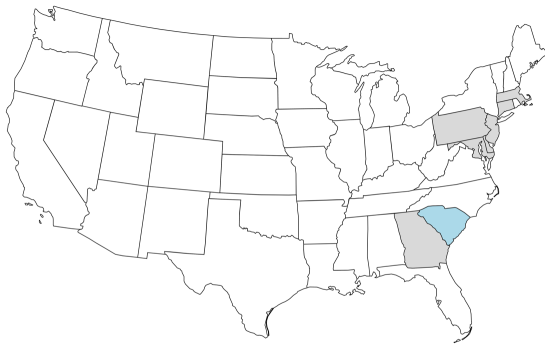
State Butterfly



Baltimore Checkerspot

Annapolis

South Carolina



Fun Facts:

The word Carolina comes from the Latin word Carolus which translates to Charles.

South Carolina is home to Morgan Island (AKA Monkey Island) which is uninhabited by people and has about 4,000 monkeys.

Columbia is the first US city named after Christopher Columbus.

8th State to join the Union
on May 23, 1788.

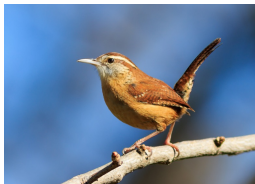
The Palmetto State

State Tree



Sabal Palm

State Bird



Carolina Wren

State Capital



Columbia

State Flower



Yellow Jasmine

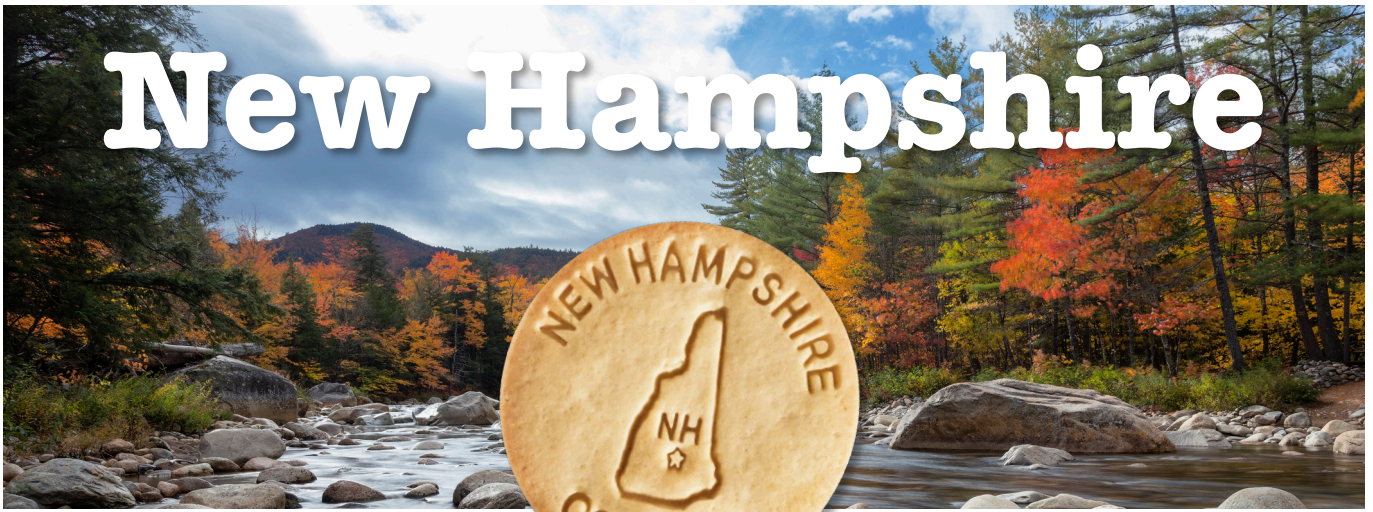
State Insect



Carolina Mantis

Columbia

New Hampshire



Fun Facts:

New Hampshire was originally named North Virginia.

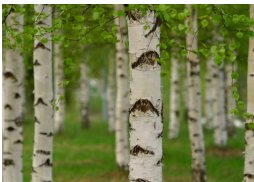
New Hampshire has the shortest coastline of any coastal state in the U.S. – Only about 18 miles.

In 1787, the alarm clock was invented in Concord by Levi Hutchins.

9th State to join the Union
on June 21, 1788.

The Granite State

State Tree



Paper Birch

State Bird



Purple Finch

State Capital



Concord

State Flower



Purple Lilac

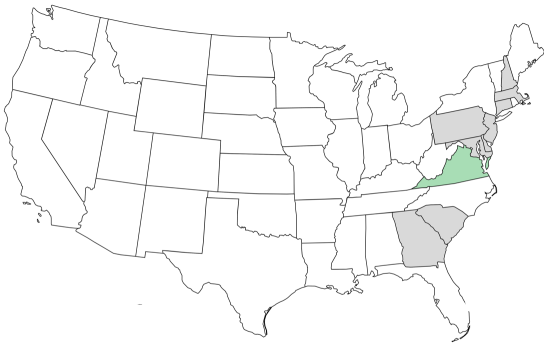
State Insect



Ladybug

Concord

Virginia



Fun Facts:

Virginia is the birthplace of 8 US presidents! That's more than any other state.

Virginia is home to the first English settlement in the US – Jamestown.

Richmond entered the 20th century with one of the world's first successful electric streetcar systems.

10th State to join the Union
on June 25, 1788.

Old Dominion

State Tree



Flowering
Dogwood

State Bird



Northern
Cardinal

State Capital



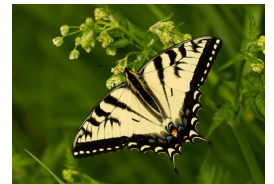
Richmond

State Flower



Flowering
Dogwood

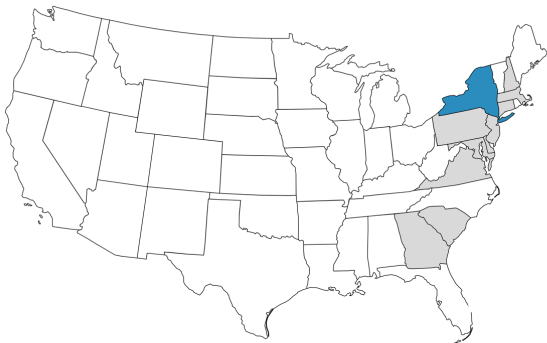
State Butterfly



Tiger Swallowtails

Richmond

New York



11th State to join the Union
on July 26, 1788.

Fun Facts:

New York is home to the Federal Reserve Bank which houses the largest amount of gold in the world.

In 1905, the very first pizza restaurant in the US opened in NY.

Albany is the oldest city in New York.

The Empire State

State Tree



Sugar Maple

State Bird



Eastern
Bluebird

State Capital



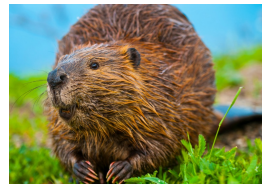
Albany

State Flower



Rose

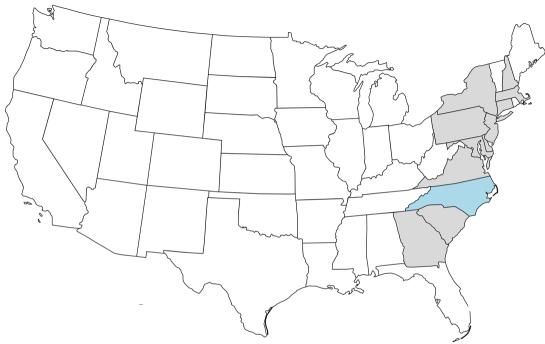
State Mammal



Beaver

Albany

North Carolina



Fun Facts:

North and South Carolina were originally one territory.

In 1903, the Wright brothers completed the first successful powered airplane flight in NC.

Raleigh is known as the "City of Oaks" due to the vast number of Oak Trees that line the streets.

12th State to join the Union
on November 21, 1789.

The Tar Heel State

State Tree



Pine

State Bird



Northern
Cardinal

State Capital



Raleigh

State Flower



Flowering
Dogwood

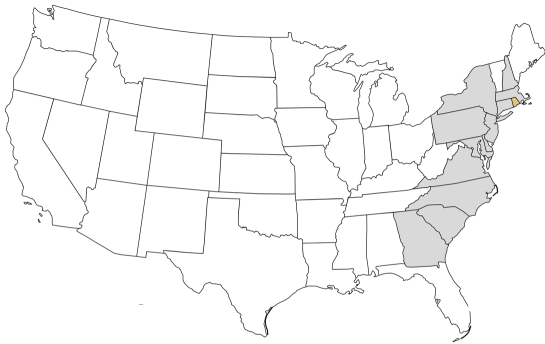
State Insect



Honeybee

Raleigh

Rhode Island



13th State to join the Union
on May 29, 1790.

Fun Facts:

Rhode Island is the smallest U.S. state by area.

All Rhode Island residents are within about 30 miles of the water.

Providence is the most populous city in Rhode Island.

Little Rhodie

State Tree



Red Maple

State Bird



Rhode Island
Red

State Capital



Providence

State Flower



Common Blue
Violet

State Mammal



Harbor Seal

Providence

Vermont



Fun Facts:

Vermont is the largest producer of maple syrup in the US, with about 2.5 million gallons a year!

Vermont was the first state to join the Union after the 13 colonies.

Montpelier is the least populated capital city in the US with only about 8,000 residents.

14th State to join the Union
on March 4, 1791.

The Green Mountain State

State Tree



Sugar Maple

State Bird



Hermit Thrush

State Capital



Montpelier

State Flower



Red Clover

State Mammal



Morgan Horse

Montpelier

Kentucky



Fun Facts:

Kentucky is home to the world's longest cave system - Mammoth Cave National Park.

October 19th is National Kentucky Day.

Frankfort is home to the Kentucky First Lady Doll Collection, located inside the Capitol building.

15th State to join the Union
on June 1, 1792.

The Bluegrass State

State Tree



Tulip Tree

State Bird



Cardinal

State Capital



Frankfort

State Flower



Giant
Goldenrod

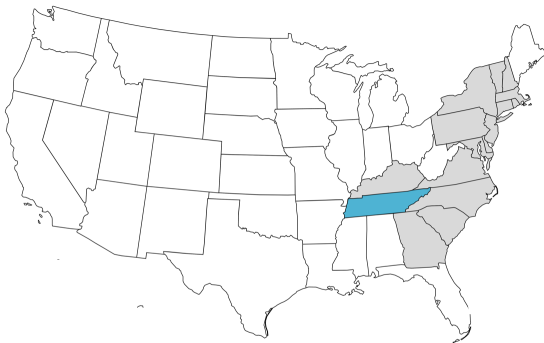
State Mammal



Gray Squirrel

Frankfort

Tennessee



Fun Facts:

Tennessee is tied with Missouri for having the most neighbors. Each borders 8 other states.

If you go to Lookout Mountain, you can see seven of those states.

President James K. Polk is buried on the grounds of the Capitol Building in Nashville.

16th State to join the Union
on June 1, 1796.

The Volunteer State

State Tree



Tulip Tree

State Bird



Mockingbird

State Capital



Nashville

State Flower



Irises

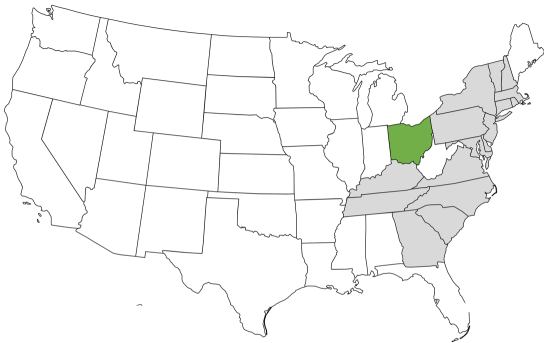
State Mammal



Raccoon

Nashville

Ohio



Fun Facts:

Ohio is the birthplace of 7 US presidents – Grant, Hayes, Garfield, Harrison, McKinley, Taft & Harding.

Ohio was the first US state to use police cars (wagons).

50% of the US lives within a 500-mile radius of Columbus.

17th State to join the Union
on March 1, 1803.

The Buckeye State

State Tree



Ohio
Buckeye

State Bird



Cardinal

State Capital



Columbus

State Flower



Carnation

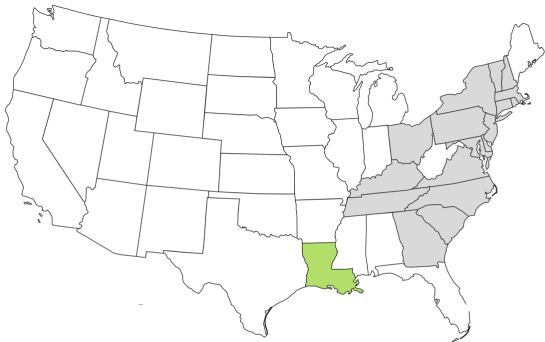
State Mammal



White-Tailed
Deer

Columbus

Louisiana



Fun Facts:

Louisiana is home to the world's longest bridge over water – Lake Pontchartrain Causeway which is 24 miles long.

Louisiana is known as the birthplace of jazz.

The Capitol building is the tallest in the U.S., standing at 450 feet.

18th State to join the Union
on April 30, 1812.

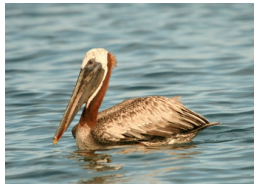
The Pelican State

State Tree



Bald Cypress

State Bird



Eastern Brown Pelican

State Capital



Baton Rouge

State Flower



Magnolia

State Butterfly



Gulf Fritillary

Baton Rouge

Indiana



Fun Facts:

Indiana means "Land of Indians". There are over 12 Native American tribes that contribute to Indiana's history.

Indiana is the world's largest producer of popcorn.

Indianapolis was not the original capital. Until 1825, Corydon was the capital of Indiana.

19th State to join the Union
on December 11, 1816.

The Hoosier State

State Tree



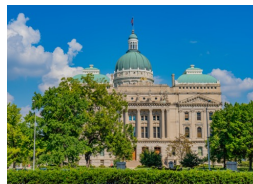
Tulip Tree

State Bird



Cardinal

State Capital



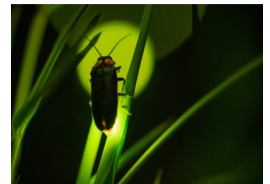
Indianapolis

State Flower



Peony

State Insect



Firefly

Indianapolis

Mississippi



20th State to join the Union
on December 10, 1817.

Fun Facts:

Approximately 62% of Mississippi's land is forest. That's about 19.2 million acres!

Mississippi leads the nation in catfish production. Belzoni is considered the catfish capital of the world.

Jackson sits on top of an extinct volcano.

The Magnolia State

State Tree



Magnolia

State Bird



Northern
Mockingbird

State Capital



Jackson

State Flower



Magnolia

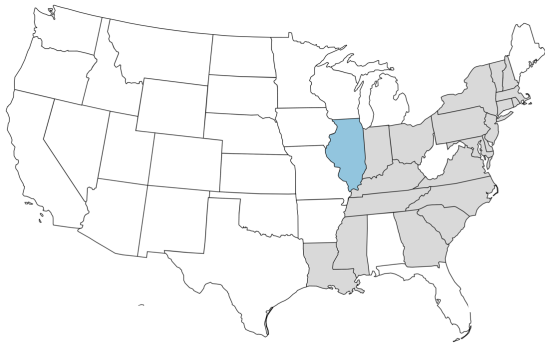
State Insect



Honeybee

Jackson

Illinois



21st State to join the Union
on December 3, 1818.

Fun Facts:

Softball got its start in Illinois, beginning as a sport called "indoor baseball".

Illinois is where the world's first modern skyscraper was built in 1885.

Illinois has had six capitol buildings. The current one resides in Springfield.

The Prairie State

State Tree



White Oak

State Bird



Cardinal

State Capital



Springfield

State Flower



Common Blue
Violet

State Butterfly



Monarch

Springfield

Alabama



22nd State to join the Union
on December 14, 1819.

Fun Facts:

The first rocket to put man on the moon was built in Alabama.

Alabama means "Tribal Town" in the Creek Indian language.

Montgomery is where the civil rights movement began in 1955 when Rosa Parks refused to give up her seat on a segregated bus.

The Yellowhammer State

State Tree



Longleaf Pine

State Bird



Northern Flicker

State Capital



Montgomery

State Flower



Camellia

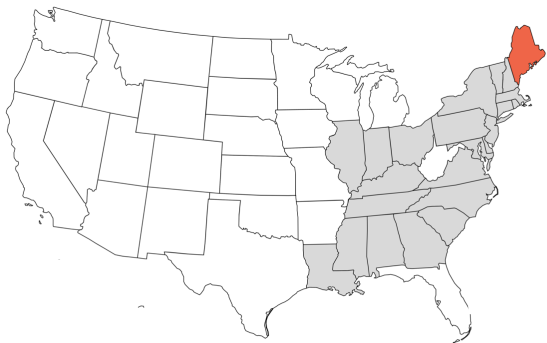
State Mammal



Black Bear

Montgomery

Maine



23rd State to join the Union
on March 15, 1820.

Fun Facts:

Maine is the largest lobster producing state in the US.

There are over 4,000 islands off the coast of Maine. Only 15 of those are populated year-round.

Augusta was not always the capital. Portland held that title until 1827.

The Pine Tree State

State Tree



Eastern White Pine

State Bird



Black-Capped Chickadee

State Capital



Augusta

State Flower



White Pinecone

State Mammal



Moose

Augusta

Missouri



24th State to join the Union
on August 10, 1821.

Fun Facts:

The word Missouri comes from a Native American word meaning "town of the large canoe"

The first successful parachute jump occurred in Missouri in 1912.

Jefferson City was named for the third president of the United States, Thomas Jefferson.

The Show Me State

State Tree



Flowering
Dogwood

State Bird



Eastern
Bluebird

State Capital



Jefferson City

State Flower



Hawthorn
Blossom

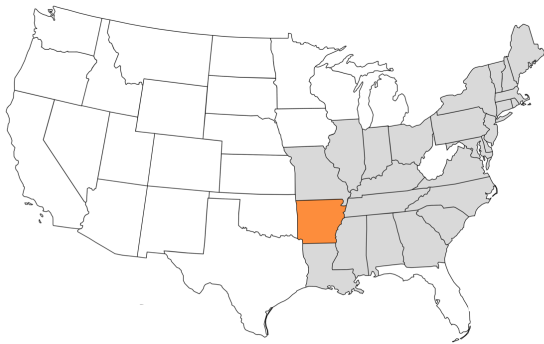
State Mammal



Missouri Mule

Jefferson City

Arkansas



25th State to join the Union
on June 15, 1836.

Fun Facts:

Arkansas's state flag has 25 stars to symbolize it becoming the 25th state.

Arkansas is home to one of only two diamond mining sites in the US.

Little Rock was named by French explorer Jean Baptiste Bernard after a small rock edging the river.

The Wonder State

State Tree



Loblolly Pine

State Bird



Northern Mockingbird

State Capital



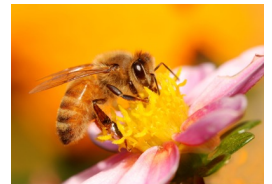
Little Rock

State Flower



Apple Blossom

State Insect



Honeybee

Little Rock

Michigan



26th State to join the Union
on January 26, 1837.

Fun Facts:

Michigan has more miles of freshwater shoreline than any other state in the nation.

In 1879, the city of Detroit became the first ever city to use phone numbers.

Lansing was not Michigan's first capital. Detroit originally held that title.

The Great Lakes State

State Tree



Eastern White
Pine

State Bird



American
Robin

State Capital



Lansing

State Flower



Apple Blossom

State Stone



Petoskey Stone

Lansing



27th State to join the Union
on March 3, 1845.

Fun Facts:

Florida's coastline, coming in at 1,350 miles, is the longest in the continental US.

Florida has the 3rd most lakes in the US, with more than 7,500.

The name Tallahassee comes from a Muskogean word meaning "Old Fields" or "Old Towns".

The Sunshine State

State Tree



Palmetto

State Bird



Mockingbird

State Capital



Tallahassee

State Flower



Orange Blossom

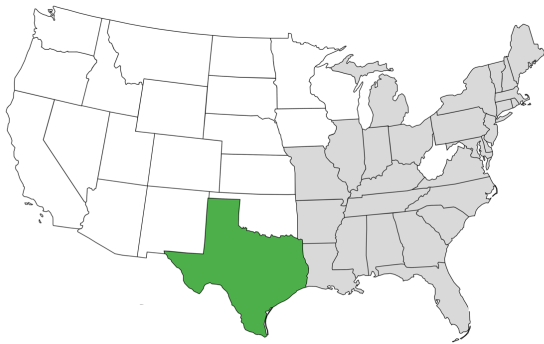
State Shell



Horse Conch

Tallahassee

Texas



28th State to join the Union
on December 29, 1845.

Fun Facts:

Texas has more counties (254) than any other state in America!

Want to go fast? Texas has the highest speed limit in the country. 85 miles per hour!

Austin has the largest urban bat population. Around 1.5 million bats live under the Congress Ave Bridge.

The Lone Star State

State Tree



Pecan Tree

State Bird



Northern Mockingbird

State Capital



Austin

State Flower



Bluebonnet

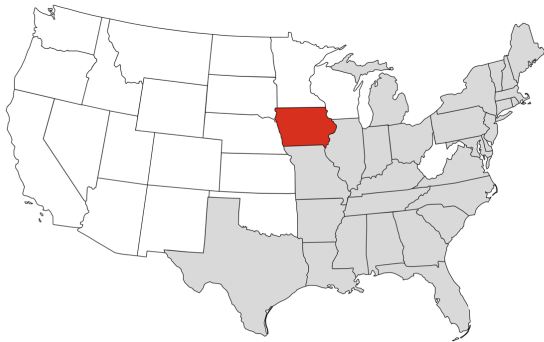
State Mammal



Texas Longhorn

Austin

Iowa



29th State to join the Union
on December 28, 1846.

Fun Facts:

Iowa is the only state bordered by two parallel major river systems – The Mississippi and The Missouri.

The first electronic digital computer was invented in Iowa.

The dome of the Capitol building contains approximately 100 ounces of 23 $\frac{3}{4}$ karat gold.

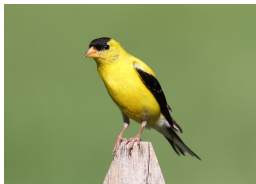
The Hawkeye State

State Tree



Bur Oak

State Bird



American Goldfinch

State Capital



Des Moines

State Flower



Prairie Rose

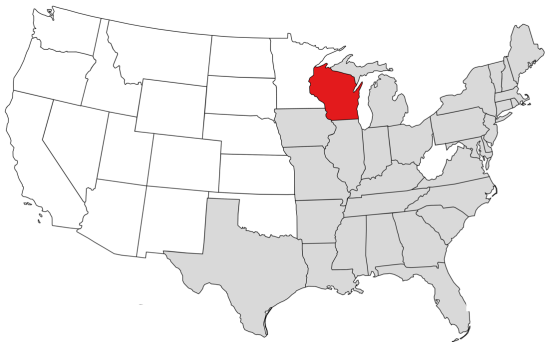
State Rock



Geode

Des Moines

Wisconsin



30th State to join the Union
on May 29, 1848.

Fun Facts:

Wisconsin is home to the first house ever to be lit by electricity in 1882 - the Hearthstone Historic House.

Wisconsin has more dairy cattle per square mile than any other state.

Madison is 1 of 2 US cities built on an isthmus (basically a land bridge).

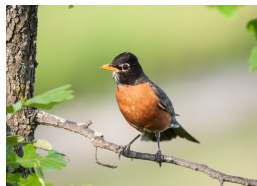
The Badger State

State Tree



Sugar Maple

State Bird



American Robin

State Capital



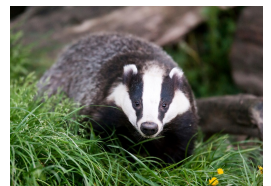
Madison

State Flower



Common Blue Violet

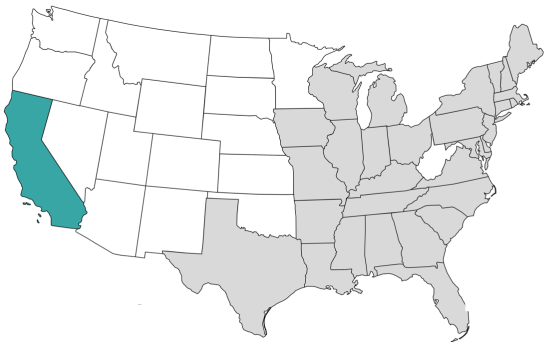
State Mammal



Badger

Madison

California



31st State to join the Union
on September 9, 1850.

Fun Facts:

California is home to the world's largest tree. "General Sherman" is a Sequoia that stands 275 ft tall and is 36 ft in diameter.

California is the highest populated state in the US with approximately 39 million people.

Sacramento is known as America's Farm-to-Fork capital.

The Golden State

State Tree



Coast
Redwood

State Bird



Valley Quail

State Capital



Sacramento

State Flower



California Poppy

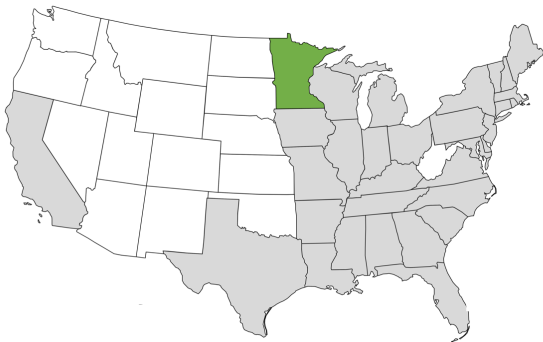
State Mammal



Grizzly Bear

Sacramento

Minnesota



32nd State to join the Union
on May 11, 1858.

Fun Facts:

Minnesota is home to 66 state parks.

Minnesota is known for many inventions including water skis, pop-up toasters and microwave popcorn.

St. Paul has 26 miles of Mississippi riverfront – more than any other city.

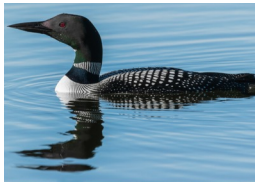
Land of 10,000 Lakes

State Tree



Red Pine

State Bird



Loon

State Capital



St. Paul

State Flower



Showy Lady's
Slippers

State Butterfly



Monarch

St. Paul

Oregon



33rd state to join the Union
on February 14, 1859.

Fun Facts:

Oregon is home to the deepest lake in the US – Crater Lake.

Oregon produces about 98% of America's hazelnuts.

Salem has had three Capitol buildings. The first two burnt down, but the current one has been holding strong since 1938.

The Beaver State

State Tree



Douglas Fir

State Bird



Western
Meadowlark

State Capital



Salem

State Flower



Oregon Grape

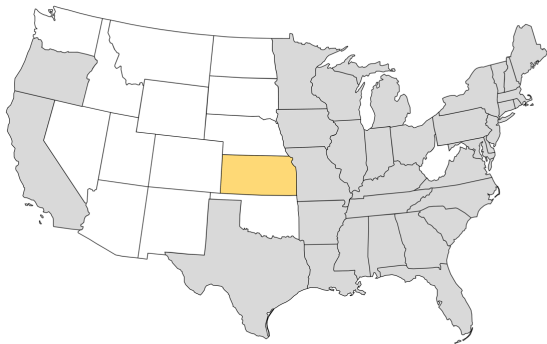
State Mammal



Beaver

Salem

Kansas



34th state to join the Union
on January 29, 1861.

Fun Facts:

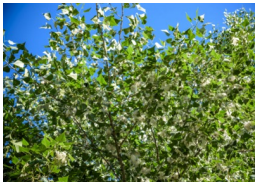
Kansas is home to the geographic center of the contiguous US.

Kansas is estimated to have over 700 caves!

You can tour the Capitol building all the way up to the dome – 296 steps!

The Sunflower State

State Tree



Cottonwood

State Bird



Western
Meadowlark

State Capital



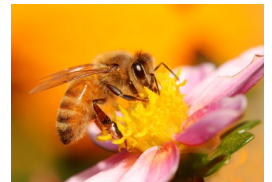
Topeka

State Flower



Sunflower

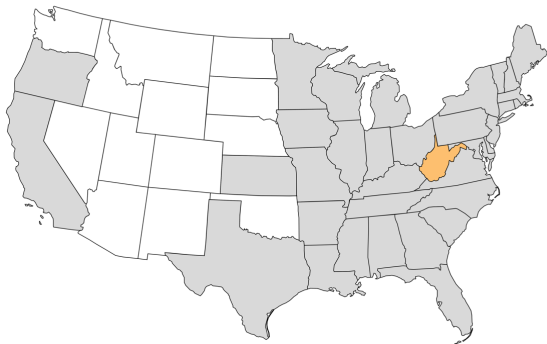
State Insect



Honeybee

Topeka

West Virginia



35th State to join the Union
on June 20, 1863.

Fun Facts:

West Virginia is responsible for approximately 14% of America's coal production.

West Virginia is home to The Coal House – the only home in the world made entirely of coal.

Charleston has the largest population of all West Virginian cities.

The Mountain State

State Tree



Sugar Maple

State Bird



Northern
Cardinal

State Capital



Charleston

State Flower



Rhododendron

State Mammal

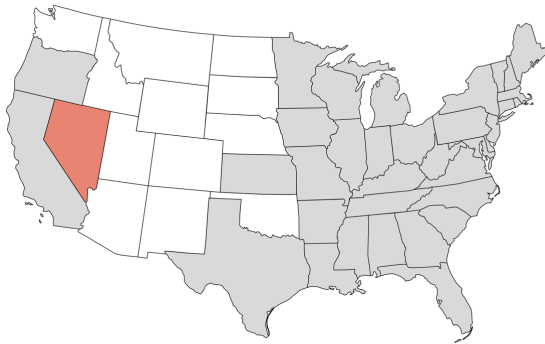


Black Bear

Charleston



Nevada



36th State to join the Union
on October 31, 1864.

Fun Facts:

Nevada originates from a Spanish word meaning "snow-covered".

Nevada is considered the driest state in the US, averaging only about 7 inches of rain per year.

Carson City was named after frontier legend Kit Carson.

The Silver State

State Tree



Bristlecone
Pine

State Bird



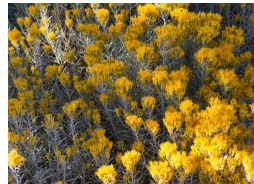
Mountain
Bluebird

State Capital



Carson City

State Flower



Big Sagebrush

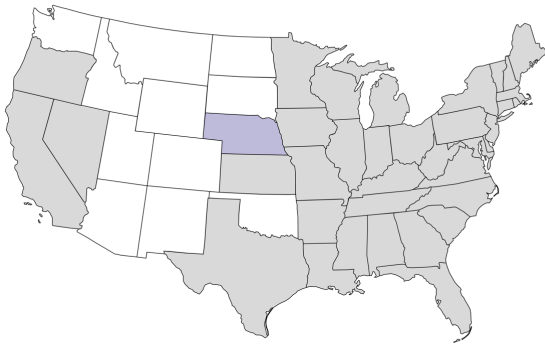
State Mammal



Desert Bighorn
Sheep

Carson City

Nebraska



37th State to join the Union
on March 1, 1867.

Fun Facts:

Nebraska is known for its farming and agricultural production. Nearly 92% of its land is made up of farms and ranches.

Nebraska is home to the world's largest indoor rainforest – Lied Jungle located at the Henry Doorly Zoo.

Lincoln houses the world's largest collection of elephant skeletons.

The Cornhusker State

State Tree



Eastern
Cottonwood

State Bird



Western
Meadowlark

State Capital



Lincoln

State Flower



Goldenrod

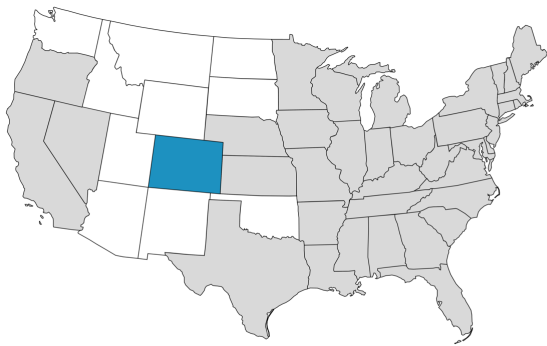
State Mammal



White-Tailed
Deer

Lincoln

Colorado



38th State to join the Union
on August 1, 1876.

Fun Facts:

Colorado is part of the Four States Monument – the only place in the US shared by four states.

Colorado is known as the Centennial State because it joined the Union 100 years after signing the Declaration of Independence.

Denver records an average of 300+ days of sunshine per year.

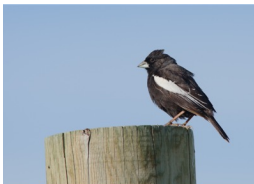
The Centennial State

State Tree



Blue Spruce

State Bird



Lark Bunting

State Capital



Denver

State Flower



Rocky Mountain
Columbine

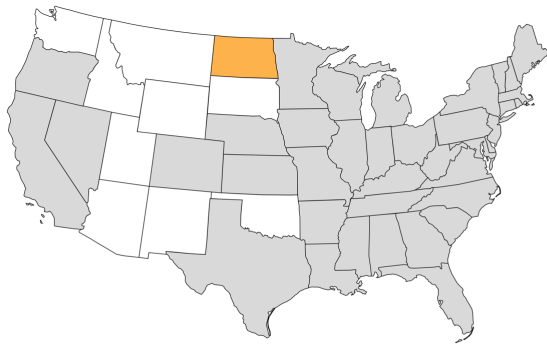
State Mammal



Bighorn Sheep

Denver

North Dakota



39th State to join the Union
on November 2, 1889.

Fun Facts:

Dakota comes from the Sioux Indian word for "friend".

North Dakota is home to the National Buffalo Museum which has a buffalo statue that stands 26 ft high and 45 ft long.

The Capitol building in Bismarck is the tallest building in the state.

The Peace Garden State

State Tree



American
Elm

State Bird



Western
Meadowlark

State Capital



Bismarck

State Flower



Prairie Rose

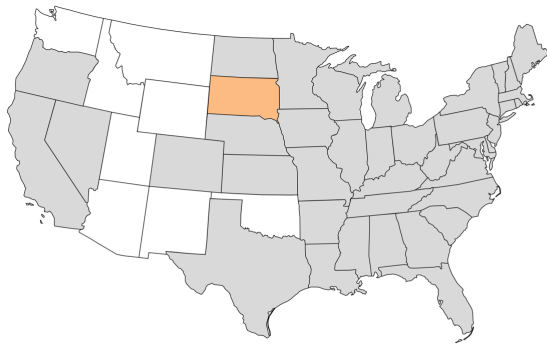
State Mammal



Horse

Bismarck

South Dakota



40th State to join the Union
on November 2, 1889.

Fun Facts:

South Dakota is home to a mountain with the highest peak in the US east of the Rockies – Black Elk Peak (AKA – Harney Peak).

It is also home to Mount Rushmore – featuring the faces of four US presidents carved into it.

Pierre was named after French fur trader Pierre Chouteau, Jr in 1880.

The Mount Rushmore State

State Tree



White Spruce

State Bird



Ring-Necked
Pheasant

State Capital



Pierre

State Flower



American
Pasque

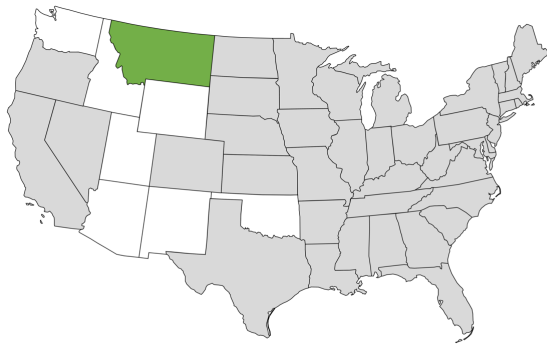
State Mammal



Coyote

Pierre

Montana



41st State to join the Union
on November 8, 1889.

Fun Facts:

Montana is home to more elk, deer and antelope than humans.

Triple Divide Peak in Glacier National Park is the only location in the world with a triple divide allowing water to flow in to the Atlantic, Pacific and Arctic oceans.

Helena was founded by accident in 1864 while searching for gold.

The Treasure State

State Tree



Ponderosa
Pine

State Bird



Western
Meadowlark

State Capital



Helena

State Flower



Bitterroot

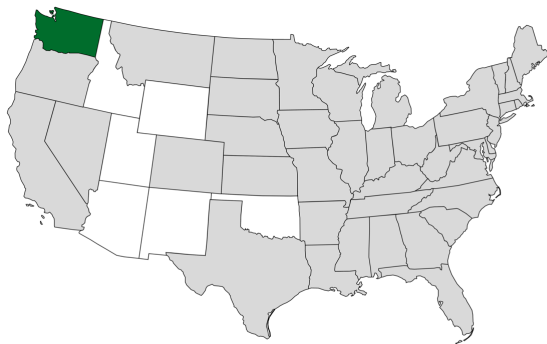
State Mammal



Grizzly Bear

Helena

Washington



42nd State to join the Union
on November 11, 1889.

Fun Facts:

Washington is the only state to be named after a president. Can you guess which one?

Washington is home to several bridges made exclusively for squirrels. The first was made in 1963 and named "Nutty Narrows".

Olympia (nickname: Oly) is the 22nd largest city in WA.

The Evergreen State

State Tree



Western
Hemlock

State Bird



American
Goldfinch

State Capital



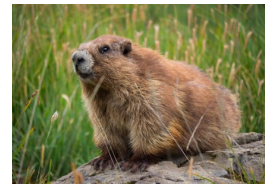
Olympia

State Flower



Pacific
Rhododendron

State Mammal



Olympic Marmot

Olympia

Idaho



43rd state to join the Union
on January 4, 1896.

Fun Facts:

Idaho is known as the Gem State because it produces 72 types of precious and semi-precious stones.

Idaho is home to Shoshone Falls which is about 45 ft taller than Niagara Falls.

The capitol building in Boise is heated by geothermal energy from the hot springs below.

The Gem State

State Tree



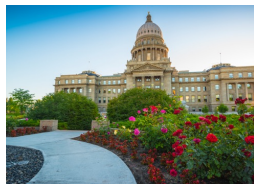
Western
White Pine

State Bird



Mountain
Bluebird

State Capital



Boise

State Flower



Syringa

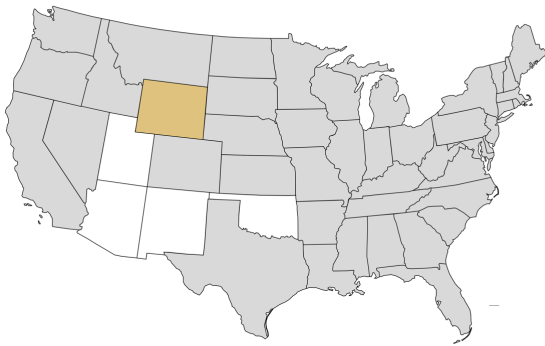
State Butterfly



Monarch

Boise

Wyoming



44th state to join the Union
on July 10, 1890.

Fun Facts:

Wyoming is the least populated state with 578,000 people.

It was given its nickname, the Equality State, because it was the first state to give women the right to vote.

In the 1880's, Cheyenne was one of the wealthiest cities in the world due to its cattle industry and the Gold Rush.

The Equality State

State Tree



Plains
Cottonwood

State Bird



Western
Meadowlark

State Capital



Cheyenne

State Flower



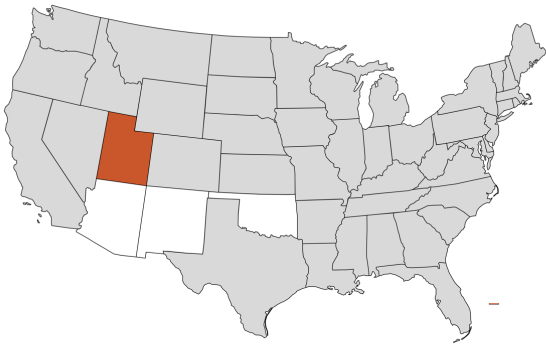
Indian
Paintbrush

State Mammal



Bison

Cheyenne



45th state to join the Union
on January 4, 1896.

Fun Facts:

Utah got its name from the Ute Indians and means "people of the mountains".

Utah is one of the four corner states along with Colorado, Arizona and New Mexico which all meet up at a single point.

The mountains near Salt Lake City average over 500 inches of snow per year.

The Beehive State

State Tree



Quaking
Aspen

State Bird



California Gull

State Capital



Salt Lake City

State Flower



Sego Lily

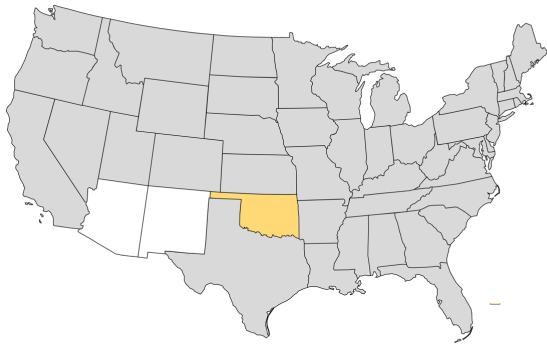
State Mammal



Elk

Salt Lake City

Oklahoma



46th state to join the Union
on November 16, 1907.

Fun Facts:

Oklahoma is named the Sooner State because of people who tried to sneak in and make land claims "sooner" than they were allowed.

The first tornado warning occurred in Oklahoma in 1948.

Oklahoma City has one of the world's largest livestock markets.

The Sooner State

State Tree



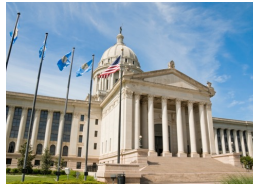
Redbud

State Bird



Scissor-Tailed
Flycatcher

State Capital



Oklahoma City

State Flower



Oklahoma Rose

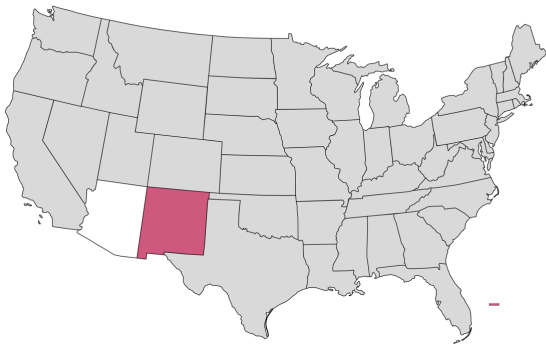
State Mammal



Buffalo

Oklahoma City

New Mexico



47th state to join the Union
on January 6, 1912.

Fun Facts:

New Mexico is where the world's first nuclear bomb was detonated.

New Mexico is a bilingual state. Nearly 1/3 of families in the state speak Spanish at home.

Santa Fe is the oldest capital city in the United States.

Land of Enchantment

State Tree



Pinyon Pine

State Bird



Great Roadrunner

State Capital



Santa Fe

State Flower



Yucca

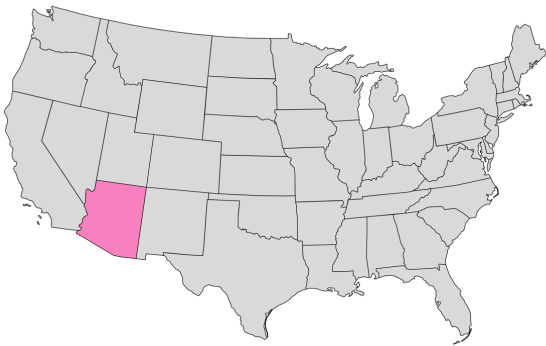
State Insect



Tarantula Hawk Wasp

Santa Fe

Arizona



48th state to join the Union
on February 14, 1912.

Fun Facts:

Arizona's Sonoran Desert is the ONLY place on Earth where the Saguaro cactus grows.

Arizona is home to 22 national parks and monuments.

Phoenix is the largest state capital in the US by population with nearly 1.7 million people.

The Grand Canyon State

State Tree



Palo Verde

State Bird



Cactus Wren

State Capital



Phoenix

State Flower



Saguaro White Blossom

State Reptile



Rattle Snake

Phoenix

Alaska



49th state to join the Union
on January 3, 1959.

Fun Facts:

Alaska is the largest state in the US by area. It is larger than TX, CA & MT combined!

There are a total of 240 days in Alaska that offer the chance to see the northern lights.

Juneau is the only U.S. capital that is inaccessible by car. You must take a plane or boat to get there.

The Last Frontier

State Tree



Sika Spruce

State Bird



Willow
Ptarmigan

State Capital



Juneau

State Flower



Alpine Forget-
Me-Not

State Dog



Alaskan
Malamute

Juneau

Hawai'i



50th state to join the Union
on August 21, 1959.

Fun Facts:

Hawaii is the only state in the US to have two official languages – English and Hawaiian.

Hawaii's state fish is the Humuhumunukunukuapuaa which means "triggerfish with a snout like a pig".

Honolulu is home to the only royal palace in the US - Iolani Palace.

The Aloha State

State Tree



Candlenut

State Bird



Nene

State Capital



Honolulu

State Flower



Yellow Hibiscus

State Mammal



Monk Seal

Honolulu

New educational holiday!

NATIONAL STATES & CAPITALS DAY



September 22nd

National States & Capitals Day is a day of education, conversation and celebration.



Learn More Library

